



JR-01 : LIVING ROOM FEATURE WALL

JR-02 : FITTED WARDROBE

JR-03 : SIDEBOARD

JR-04 : STORAGE CUPBOARD

JR-05a : WARDROBE/SHELVING

JR-05b : FLOATING DRAWERS

JR-05c : DIVAN RAISING PLATFORM

JR-05d : WALL PANEL

JR-05e : WALL HANG SHELVING

JR-06 : KITCHEN

JR-07 : KITCHEN WORKTOP

JR-08a : BATHROOM VANITY

JR-08b : MIRROR STORAGE

JR-09a : BATHROOM VANITY

JR-09b : MIRROR STORAGE

# JR-00

## GENERAL JOINERY PLAN

DATE 01/02/2026 SHEET SIZE A3 REVISION

V&V FLAT  
36 Crimscott Street, London, SE1 5YQ UK





## MATERIALS & FINISHES

### Front Panels / Doors

FINISH: NATURAL ASH WOOD VENEER MDF  
VENEER CODE: TABU 26.049  
CUT : CROWN CUT  
DOOR THICKNESS : 25MM

### Carcass Material:

FINISH : MCF  
COLOR TO MATCH DOORS



### Slatted Sliding Panels:

Material: Solid oak or veneered MDF slats fixed to a backing panel.  
Slat profile: 20–25mm wide slats with 10–15mm gaps (exact profile TBC).  
Panels to run on top-and-bottom sliding track system with: Soft-close / soft-stop mechanism  
Concealed rollers : Smooth, silent glide operation

### Bottom Base Unit (Low Cabinet)

Drawer/hinged fronts: Push-to-open  
Top surface: Dekton Travertine finish, thickness 12mm or 20mm (TBC).

### TV PANEL

TV to sit inside a recessed veneered mdf frame.  
Cable management: Behind panel Access hatch to be provided Minimum 2 conduits with pull wire for future upgrades.

### SHELVING

Decorative Shelves  
Adjustable shelves in veneered MDF. Thickness: 25mm minimum.  
Load rating suitable for books and accessories.

### LIGHTING

Shelf Lighting  
Integrated LED linear strip at underside of shelves. Dimeable. 3000K warm white, CRI > 90. Minimum 8–10W/m, with opal diffuser. Recessed aluminium channel, flush-mounted.

### Perimeter Back Panel Lighting

LED strip concealed in top shadow gap running the full length of the unit.  
3000K, dimmable, driver accessible from services area.

### Electrical Preparation

Contractor must allow for: Cable routes. Ventilation gaps for drivers  
Driver location behind the bottom unit or within accessible panel.

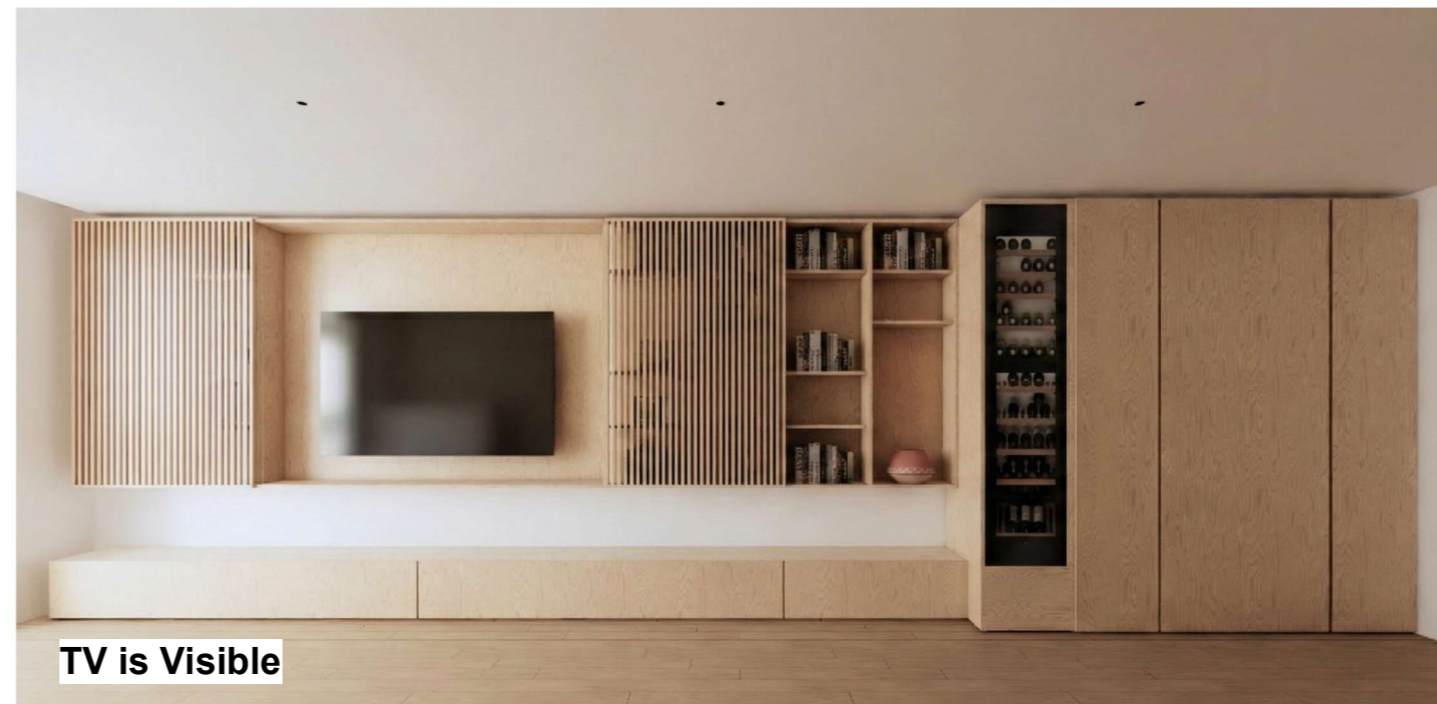
### HARDWARE

Soft-close hinges: Blum or Häfele. Drawer runners: Blum Movento soft-close.  
Sliding hardware for slatted doors: Häfele / Hawa / Sugatsune (soft-stop version). All fixings concealed.

### INSTALLATION DETAILS

Scribing to uneven walls. Shadow gaps around frame: 5–8mm.  
Ventilation gap behind TV panel (min. 20mm). All surfaces sanded and lacquered with matt clear finish.

**WINE FRIDGE** : Gaggenau RW414365



TV is Visible



TV is not Visible



Night View

# JR-01(2)

## LIVING ROOM SHELVING

DATE 01/02/2026 SHEET SIZE A3 REVISION

V&V FLAT

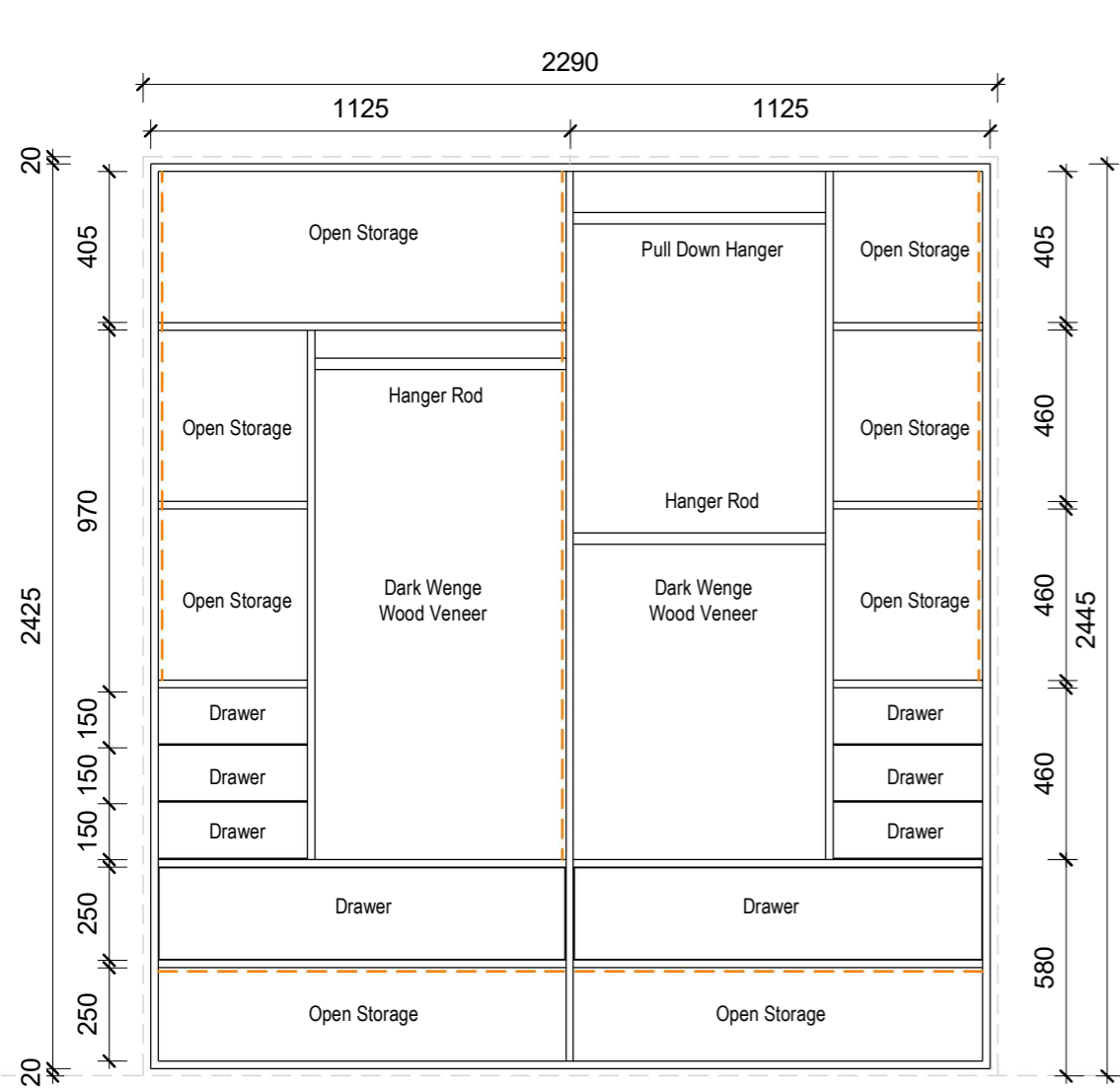
36 Crimscott Street, London, SE1 5YQ UK

**bé** BE-STUDIO  
INTERIORS &  
ARCHITECTURE

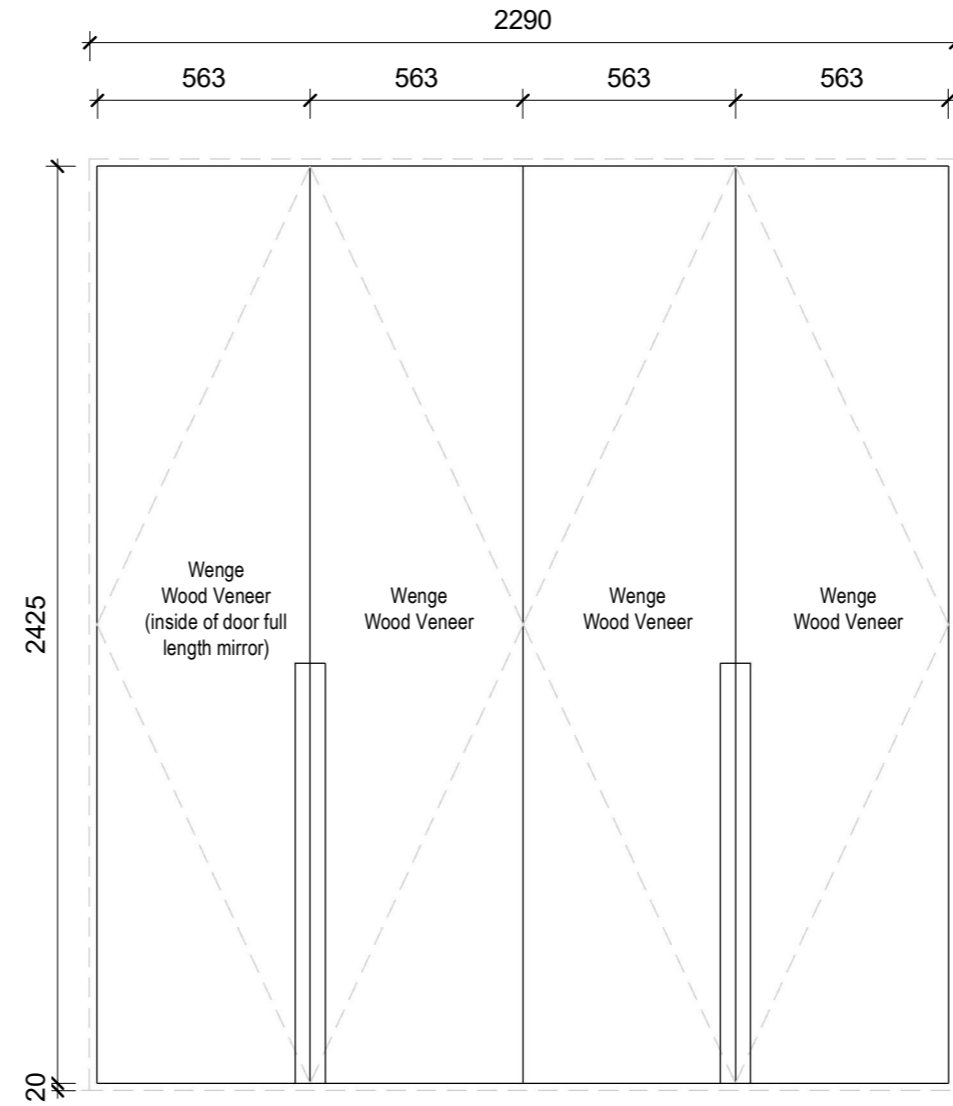
88 Union Street London SE1 0NW  
www.be-studio.co.uk

contact@be-studio.co.uk

(+44) 0208 0371964



FRONT ELEVATION 1:20



DOOR ELEVATION 1:20

**DOORS**  
**Material:** Wenge Wood Veneer  
**Thickness :** 25mm  
**Door Style:** Straight with hand groove

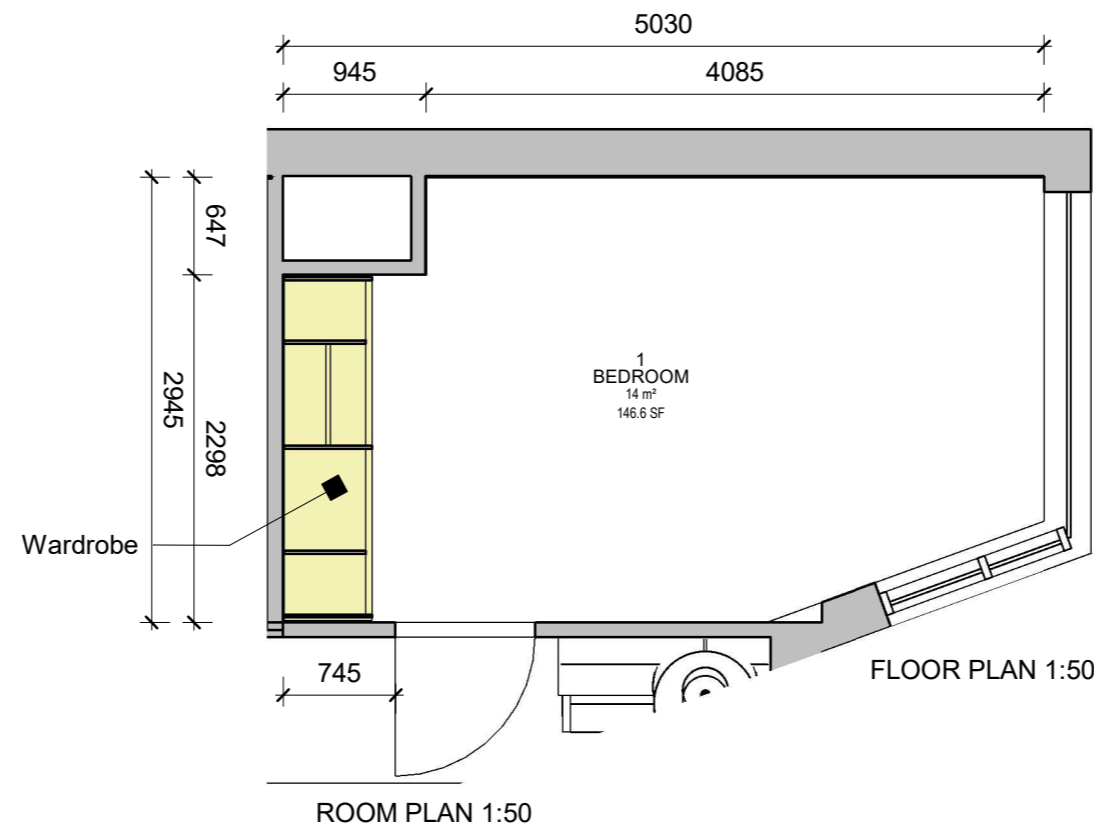
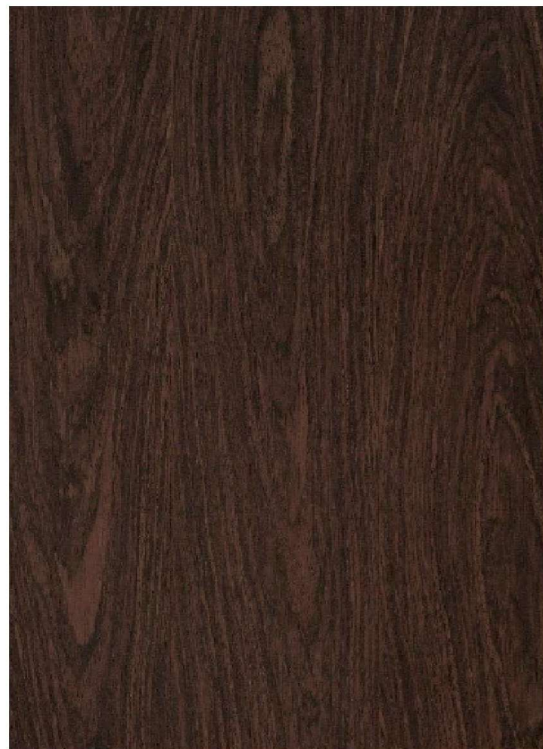
**INTERNAL CARCASS**  
**Material:** Melamin MFC to match door.

**LED Lighting Specification**  
 Colour Temperature: 3000K (warm white)  
 Brightness: ≈1000 lm/m  
 LED Density: Minimum 120 LEDs/m  
**Optics:** LED strip with lens in recessed aluminium profile with opal diffuser  
**Switching:** PIR sensor

**HARDWARE**  
 Hinges: Blum or Häfele soft-close concealed hinges  
 Drawer Runners: Full-extension soft-close (Blum Movento / Häfele Matrix)

**Accessories & Internal Layout**  
 Add one additional drawer to left side as discussed  
 Replace standard hanging rail with a Pull-Down Hanging Rail (wardrobe lift) in designated section  
 Vertical LED strips integrated into side gables  
 Open lower shelf for shoes (approx. 250–300 mm high)  
 Accessory / jewellery drawer with inserts (optional)  
 Shoe drawers or angled shelves (optional)  
 Valet rod / hanging prep bar (optional)  
 Mirror Inset at one of door

**Installation & Fitting**  
 Ceiling tolerance gap: 20–30 mm (infill/scribe to match)  
 Side tolerance gaps: 5–15 mm per side (scribe panels as required)  
 Back void: 10–20 mm for LED cables & drivers  
 Plinth: Adjustable, with removable toe-kick panel if required for access



ROOM PLAN 1:50

FLOOR PLAN 1:50

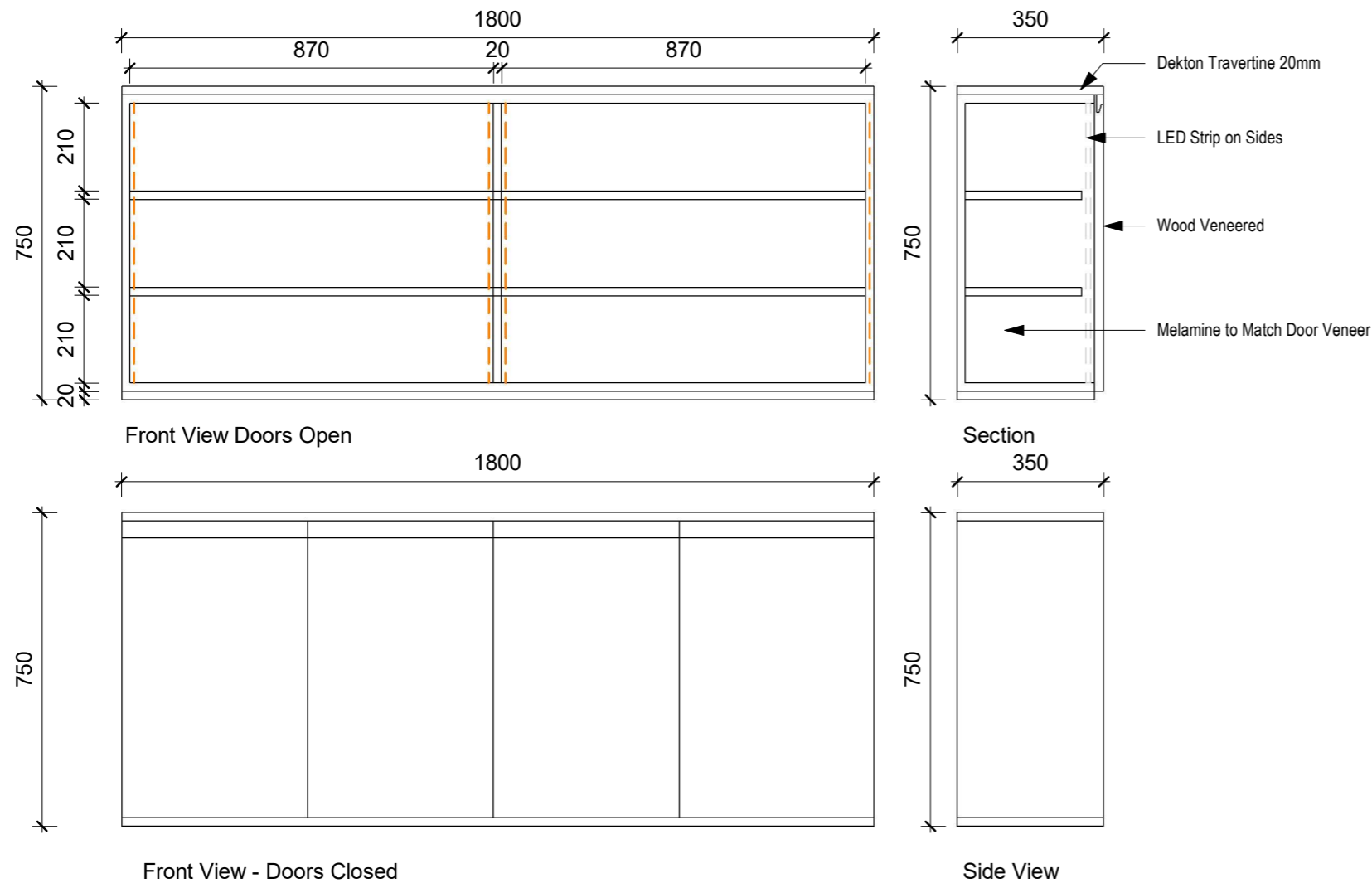
# JR-02

## WARDROBE DESIGN

DATE 01/02/2026 SHEET SIZE A3 REVISION

**V&V FLAT**  
 36 Crimscott Street, London, SE1 5YQ UK





### 1. GENERAL OVERVIEW

Type: Bespoke floor-standing sideboard with integrated lighting.

Dimensions: 1800mm (W) x 750mm (H) x 350mm (D).

Configuration: Four-door unit with internal shelving (three levels per section).

### 2. MATERIALS AND FINISHES

Component	Specification	Finish/Detail
Worktop	20mm Dekton	Product: TK06 Marmorio (Travertine). Edge Profile: Flute Point.
Door Panels	22mm MDF	Veneer: Natural Ash Wood (TABU 26.049). Cut: Crown Cut.
Carcass	Melamine Faced Chipboard (MFC)	Color-matched to the Natural Ash door veneer.
Internal Shelving	MFC	Matching carcass; adjustable or fixed as per final shop drawings.

### 3. CONSTRUCTION & JOINERY DETAILS

Door Operation: Handle-less "push-to-open" mechanism or integrated J-pull vertical rebated handles to maintain a seamless aesthetic.

Carcass Construction: Rigidly cam-locked or doweled construction. The carcass is divided into two main compartments (approx. 870mm internal width each) by a 20mm central vertical divider.

Plinth: Integrated recessed base to match the carcass/door finish.

### 4. INTEGRATED LIGHTING

Type: Concealed LED strip lighting.

Installation: Recessed vertically into the side panels of the carcass.

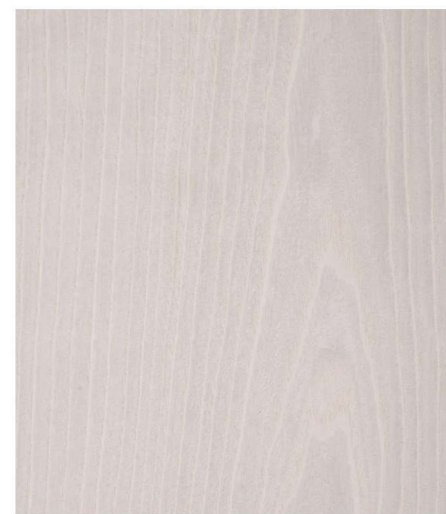
Provision: Joiner to provide routed channels and wire management holes for the electrical contractor.

### 5. EXECUTION REQUIREMENTS

Grain Matching: Veneer on door faces must be grain-matched across the four panels for visual continuity (Crown Cut pattern).

Tolerances: All dimensions must be verified on-site prior to fabrication.

Finish: Wood veneer to be sealed with a high-quality, clear matte lacquer to preserve the "Natural Ash" appearance.



#### DOOR PANELS

FINISH: NATURAL ASH WOOD VENEER MDF  
 VENEER CODE: TABU 26.049  
 CUT : CROWN CUT  
 DOOR THICKNESS : 22MM

#### CARCASS:

FINISH : MCF  
 COLOR TO MATCH DOORS

#### WORKTOP

BRAND : DEKTON  
 PRODUCT CODE : TK06 MARMORIO  
 THICKNESS : 20MM  
 EDGE : FLUTE POINT

# JR-03

## SIDEBOARD

DATE 01/02/2026 SHEET SIZE A3 REVISION

#### V&V FLAT

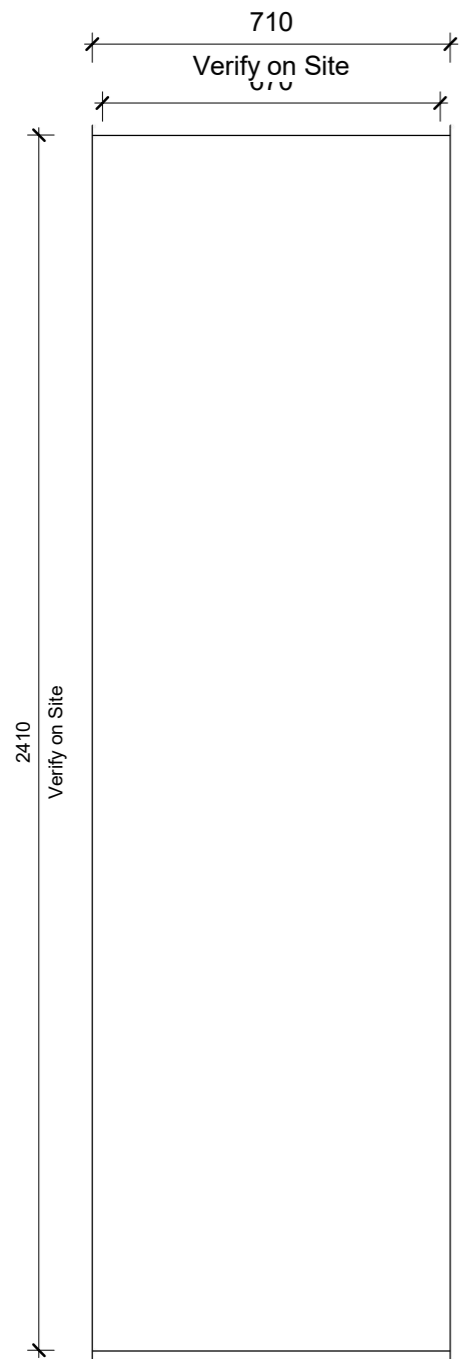
36 Crimscott Street, London, SE1 5YQ UK



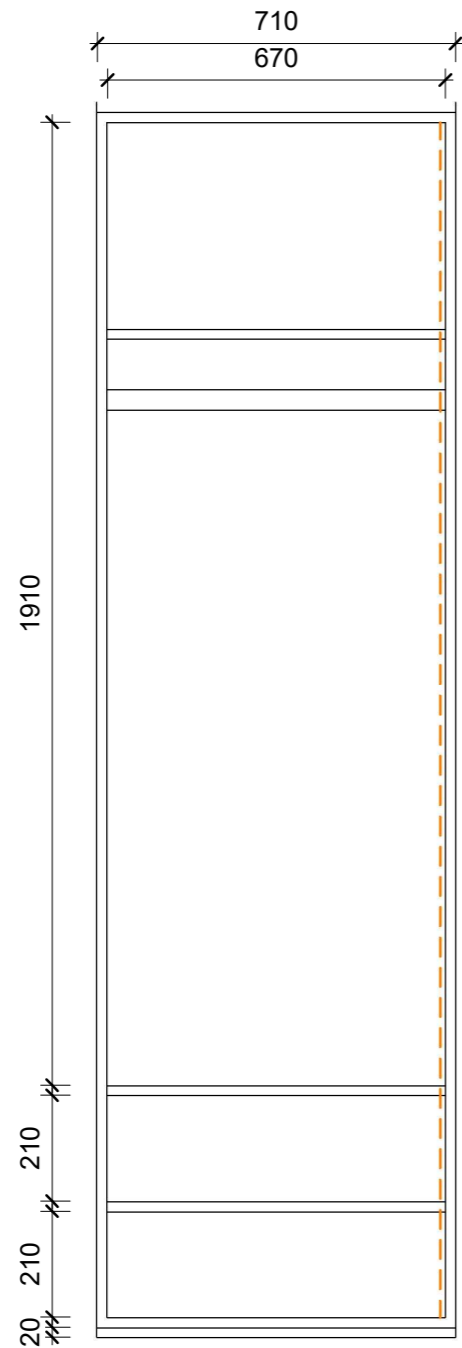
88 Union Street London SE1 0NW  
 www.be-studio.co.uk

contact@be-studio.co.uk

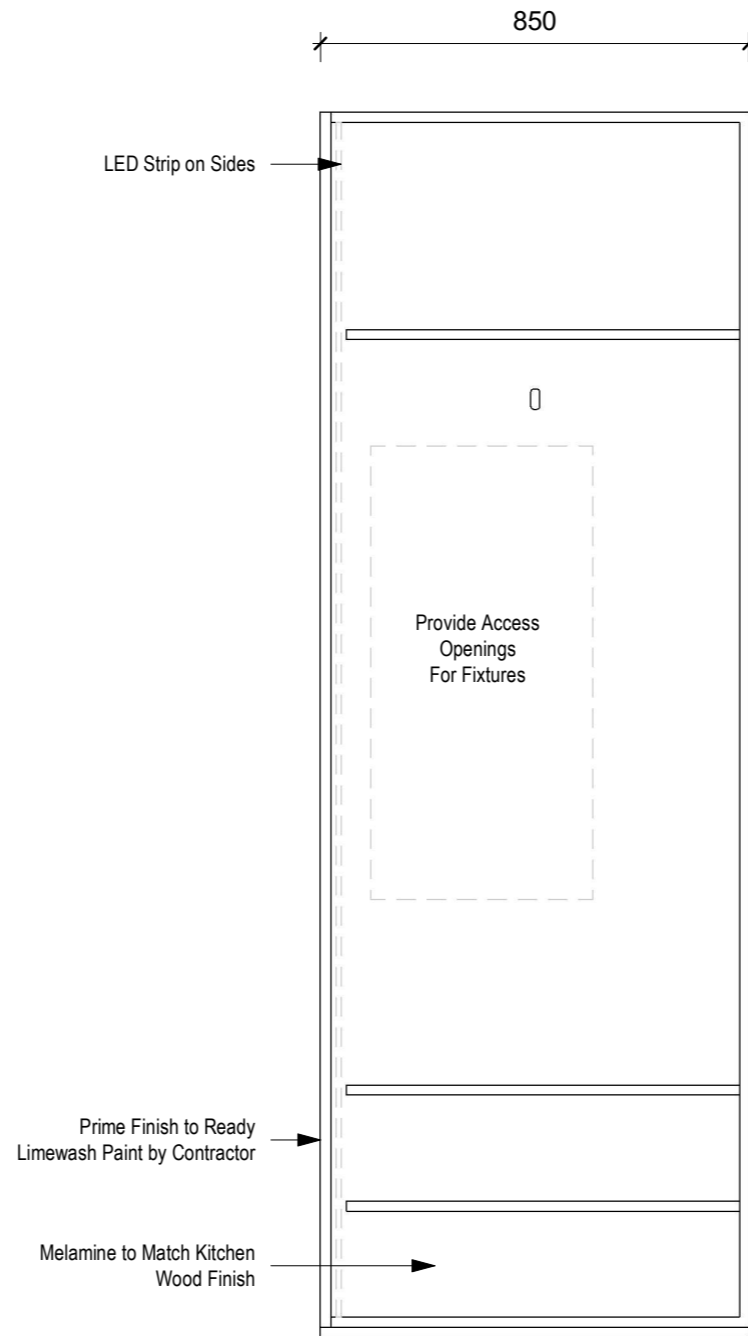
(+44) 0208 0371964



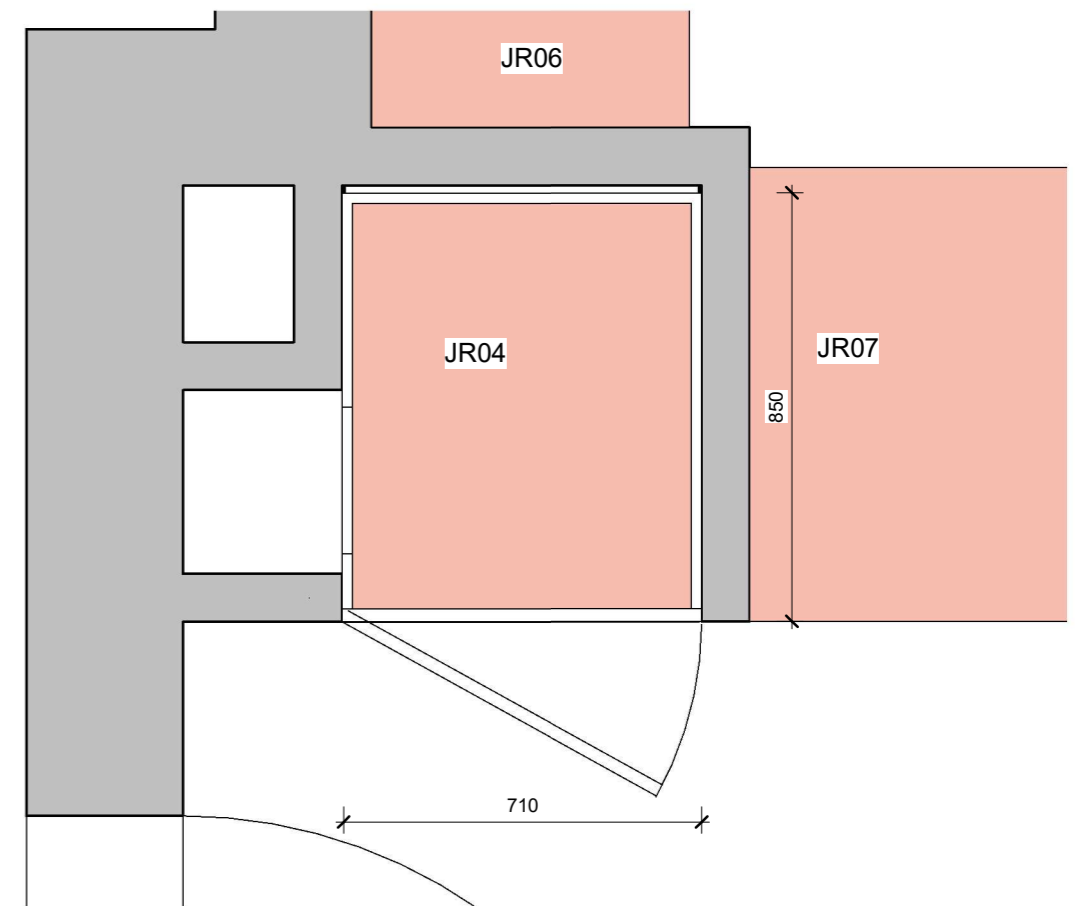
FRONT VIEW DOORS CLOSED



FRONT VIEW DOORS OPEN



SECTION



PLAN VIEW

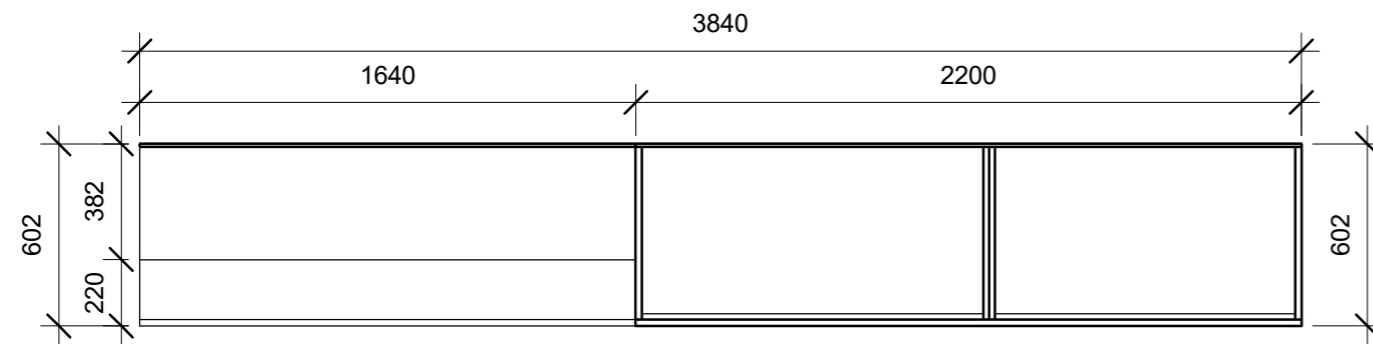
# JR-04

## ENTRANCE CUPBOARD

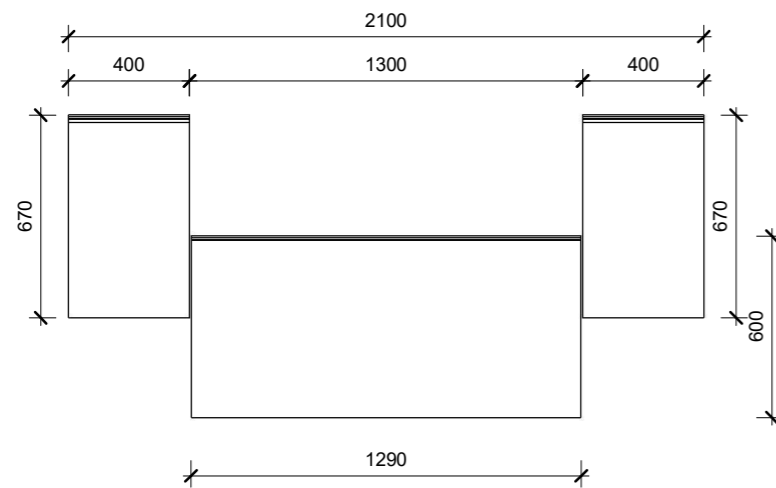
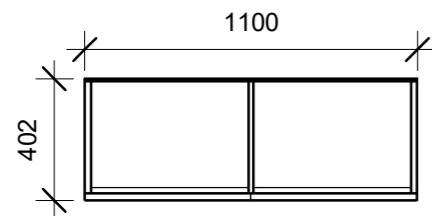
DATE 01/02/2026 SHEET SIZE A3 REVISION

V&V FLAT  
36 Crimscott Street, London, SE1 5YQ UK

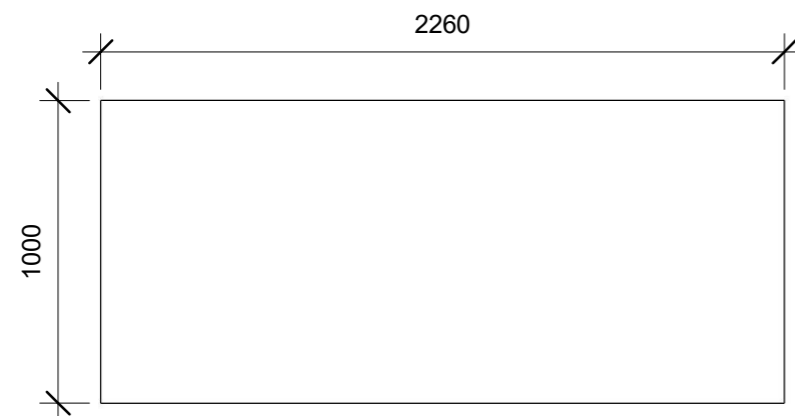




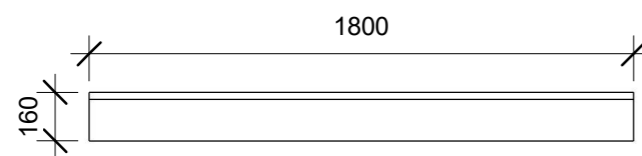
JR05a  
Wardrobe / Storage / Shelving



JR05b  
Free Standing Drawers

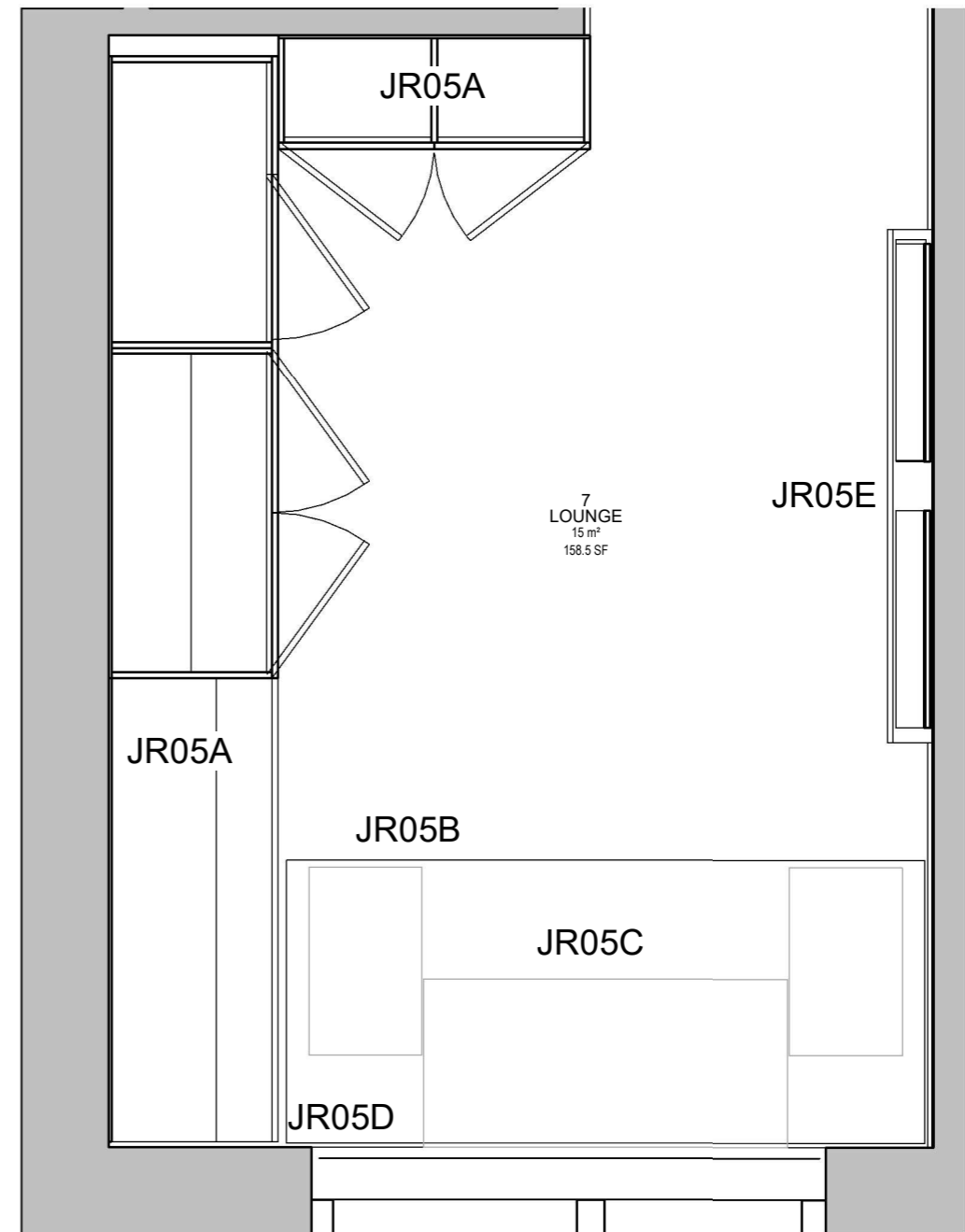


JR05c  
Lifting Platform : Divan



JR05e  
Wall Hang Shelving

PLAN VIEWS



**Front Panels / Doors**  
 FINISH: NATURAL ASH WOOD  
 VENEER MDF  
 VENEER CODE: TABU 26.049  
 CUT : CROWN CUT  
 DOOR THICKNESS : 25MM

**Carcass Material:**  
 FINISH : MCF  
 COLOR TO MATCH DOORS

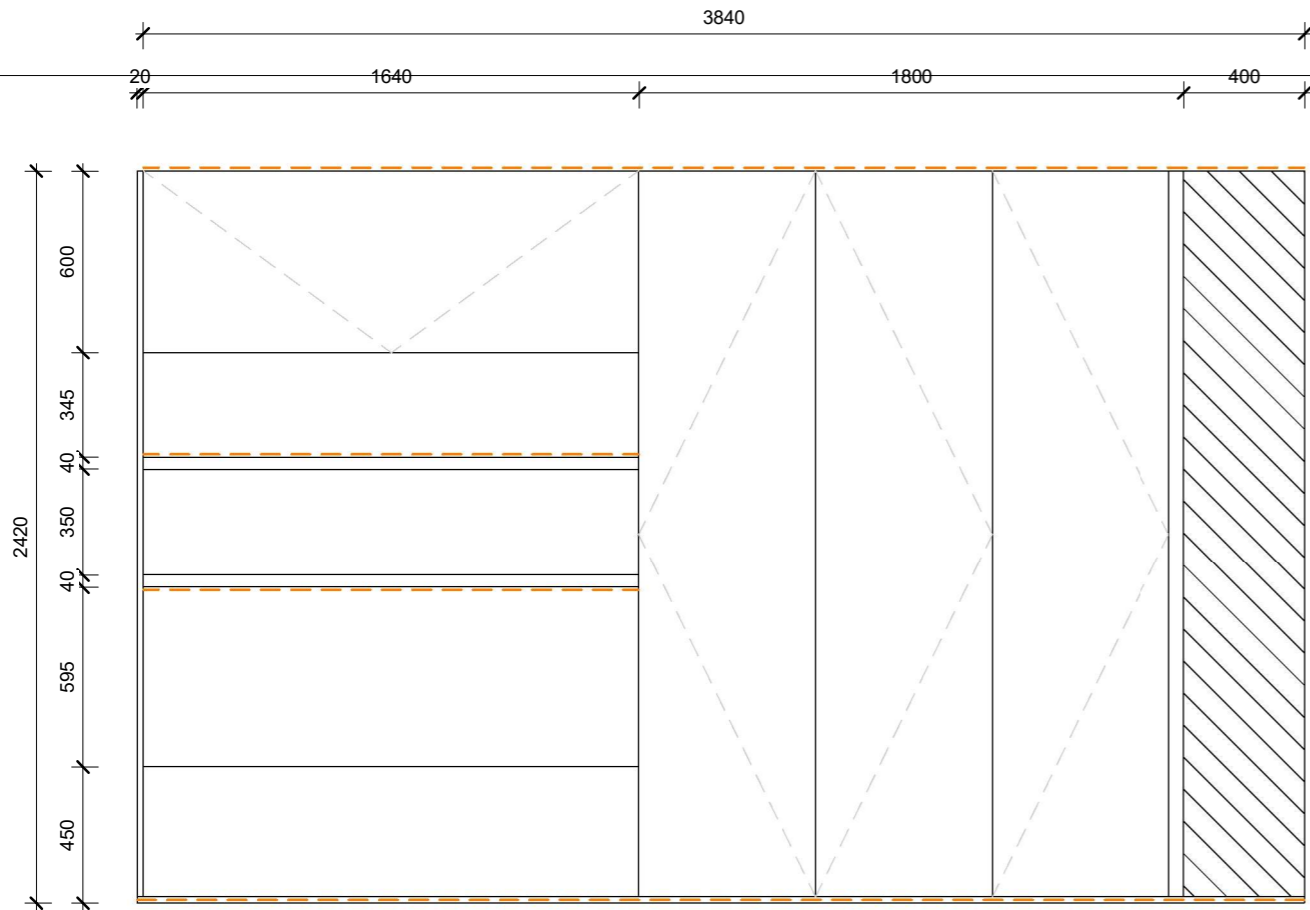


**JR-05(1)**  
 LOUNGE ROOM

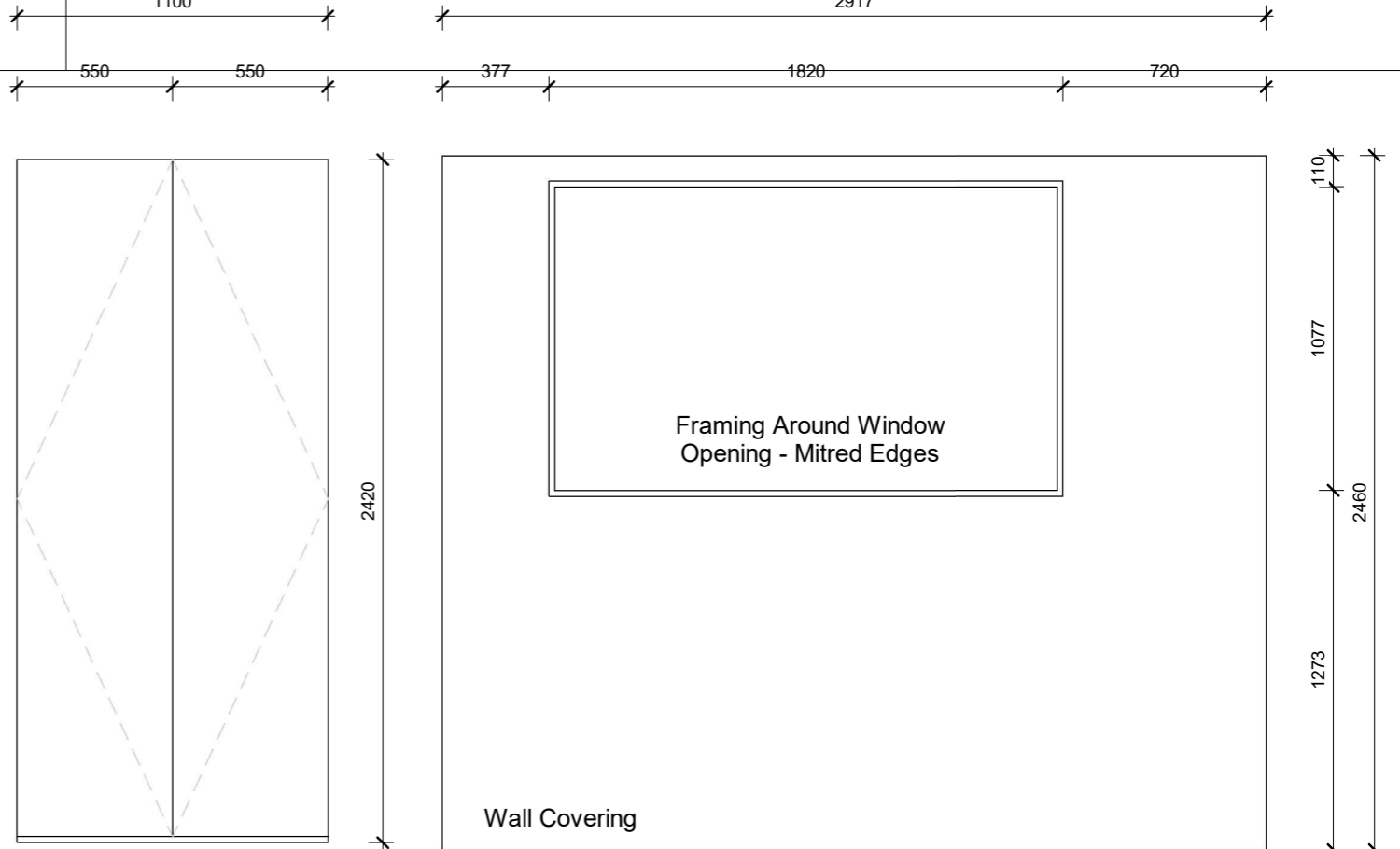
DATE 01/02/2026 SHEET SIZE A3 REVISION

**V&V FLAT**  
 36 Crimscott Street, London, SE1 5YQ UK

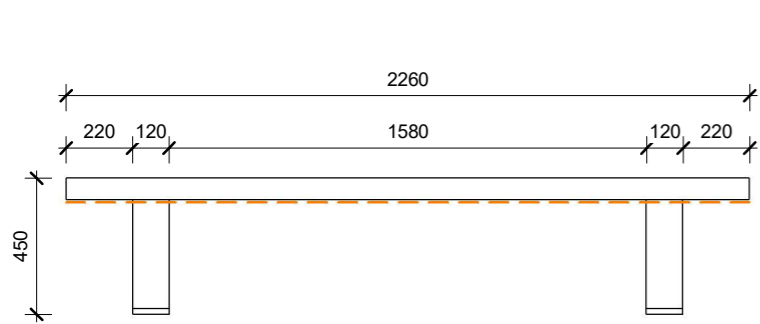




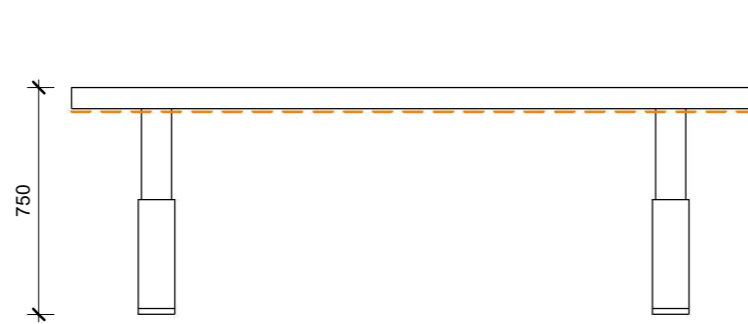
JR05a



JR05d



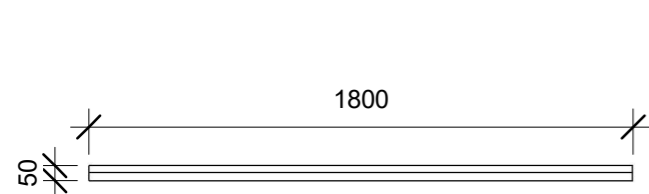
JR05c



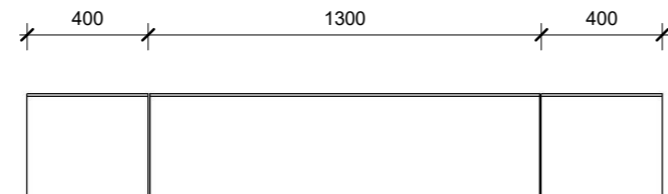
JR05c



JR05c



JR05e



JR05b

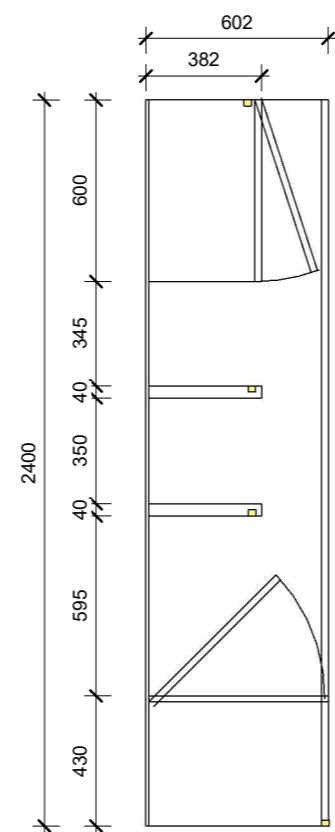
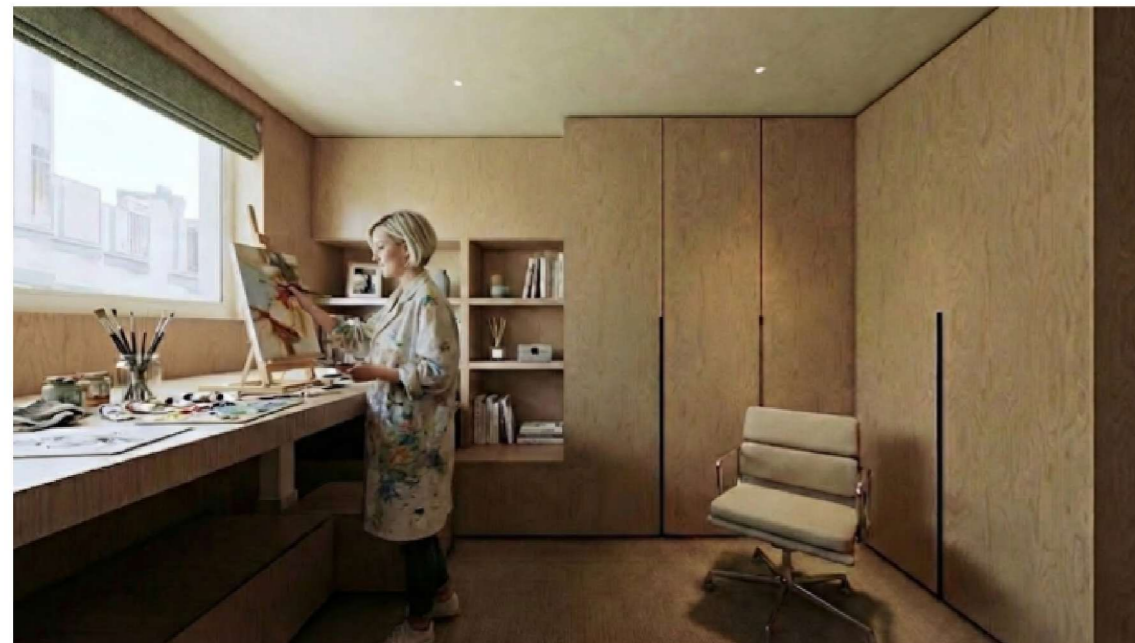
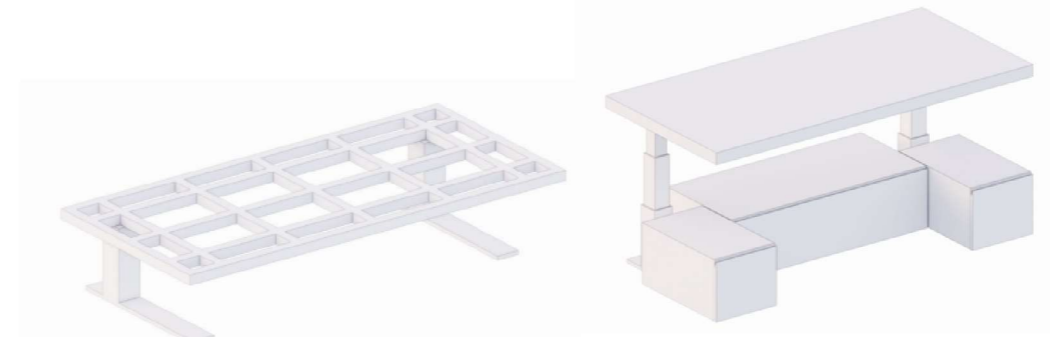
FRONT ELEVATIONS

**JR-05(2)**  
LOUNGE ROOM

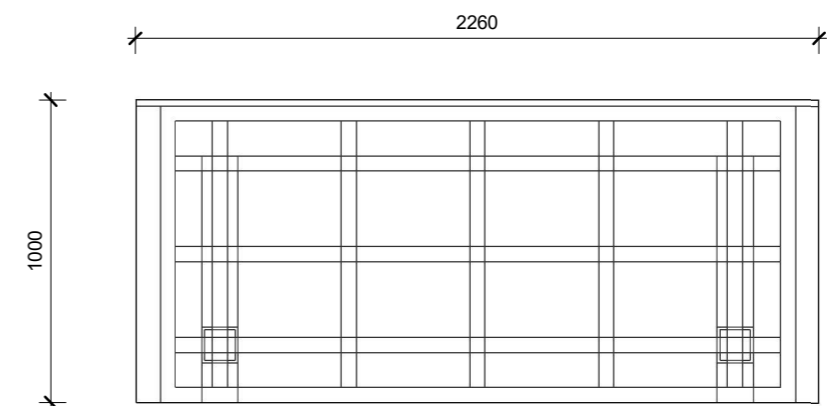
DATE 01/02/2026 SHEET SIZE A3 REVISION

V&V FLAT  
36 Crimscott Street, London, SE1 5YQ UK

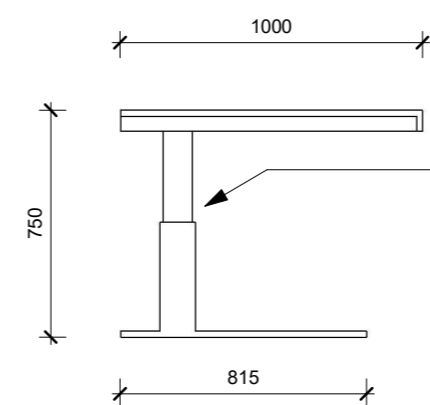




SECTION



PLAN VIEW



SECTION

Linear Actuator is required to be fixed to a leg and framing for table.

# JR-05(3) LOUNGE ROOM

DATE 01/02/2026 SHEET SIZE A3 REVISION

V&V FLAT  
36 Crimscott Street, London, SE1 5YQ UK



### 1. GENERAL FINISH & MATERIALITY

Visible Surfaces: 22mm MDF core veneered in TABU 26.049 (Natural Ash Wood).

Veneer Cut: Crown Cut with book-matched or slip-matched grain sequence across adjacent panels.

Carcassry: 18mm MFC (Melamine Faced Chipboard), color-matched to the Tabu Ash veneer.

Edge Treatment: All external corners and window reveals in Part D must be 45° mitered with internal splines for structural integrity.

Coating: Professional-grade, non-yellowing dead-matte acrylic lacquer to preserve the "natural" Ash tone.

### 2. COMPONENT SPECIFICATIONS

Part A: Wardrobe & Integrated Shelving

Doors: 22mm thick, handle-less design. Vertical rebated "J-pull" or finger-groove integrated into the door edge.

Shelving: Integrated open shelving unit within the wardrobe carcass.

Lighting: Concealed 24V LED strips (3000K) recessed in aluminum channels under each shelf and the wardrobe header.

Part B: Floating Drawers (Support Units)

Function: Heavy-duty storage units acting as the primary structural landing for Part C.

Hardware: Heavy-duty, full-extension soft-close runners (e.g., Blum Movento, 60kg+ rated).

Structural Note: Top panels reinforced to transfer the 300kg live load of the platform to the floor/wall when at the 45cm height.

Part C: Divan Motorized Platform

Mechanism: 4x Synchronized telescopic electric actuators fixed to a bespoke internal steel sub-frame.

Operational Heights:

Lowest (45cm): Live load capacity min. 300kg (Platform rests on Part B for stability).

Study Level (75cm): Static load only (No live load).

Standing Level (100cm): Static load only.

Safety: Integrated anti-collision sensors and emergency stop via remote.

Cable Management: Concealed flexible "energy chain" to manage power to the motor and any integrated surface outlets.

Part D: Wall Panels & Window Reveal

Construction: 22mm Tabu-veneered MDF wall cladding.

Joinery: Precise mitered edges at all 90° returns and window openings to create a seamless "folded" wood effect.

Fixing: Concealed Z-clips or split-battens.

Part E: Wall-Hang Art Shelving (Picture Ledge)

Construction: Internal metal "T-bracket" reinforcement to support the weight of the shelf and large-scale artwork.

Art Fixing: Mechanical fixing points (recessed track or discrete clips) to allow for interchangeable artwork.

Lighting: Recessed downward-firing LED strip on the underside for floor wash/pathway lighting.

### 3. INTEGRATED LIGHTING & ELECTRICAL

Specs: 24V High-CRI (>90) LED strips.

Drivers: All LED drivers and motorized control boxes must be housed in a ventilated, accessible service compartment within Part A.

Switching: Integrated touch-dimmer sensors or smart-home compatibility as per client requirements.

Part	Item	Material	Finish	Note
A	Wardrobe	22mm MDF / MFC	Tabu 26.049	J-pull handles
B	Drawers	22mm MDF	Tabu 26.049	Structural support for Part C
C	Platform	Steel Frame / MDF	Tabu 26.049	300kg capacity @ 45cm
D	Wall Panel	22mm MDF	Tabu 26.049	Mitered window reveals
E	Art Shelf	MDF / Metal Core	Tabu 26.049	Concealed mechanical fixing

## JR-05(4)

### LOUNGE ROOM

DATE 01/02/2026 SHEET SIZE A3 REVISION

V&V FLAT

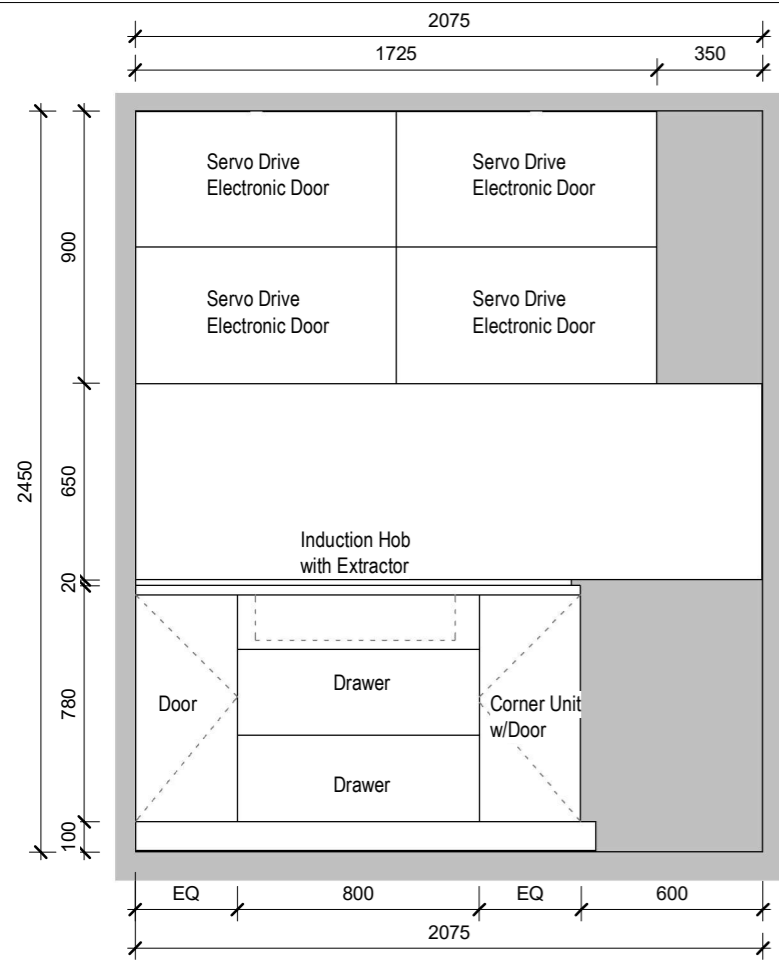
36 Crimscott Street, London, SE1 5YQ UK



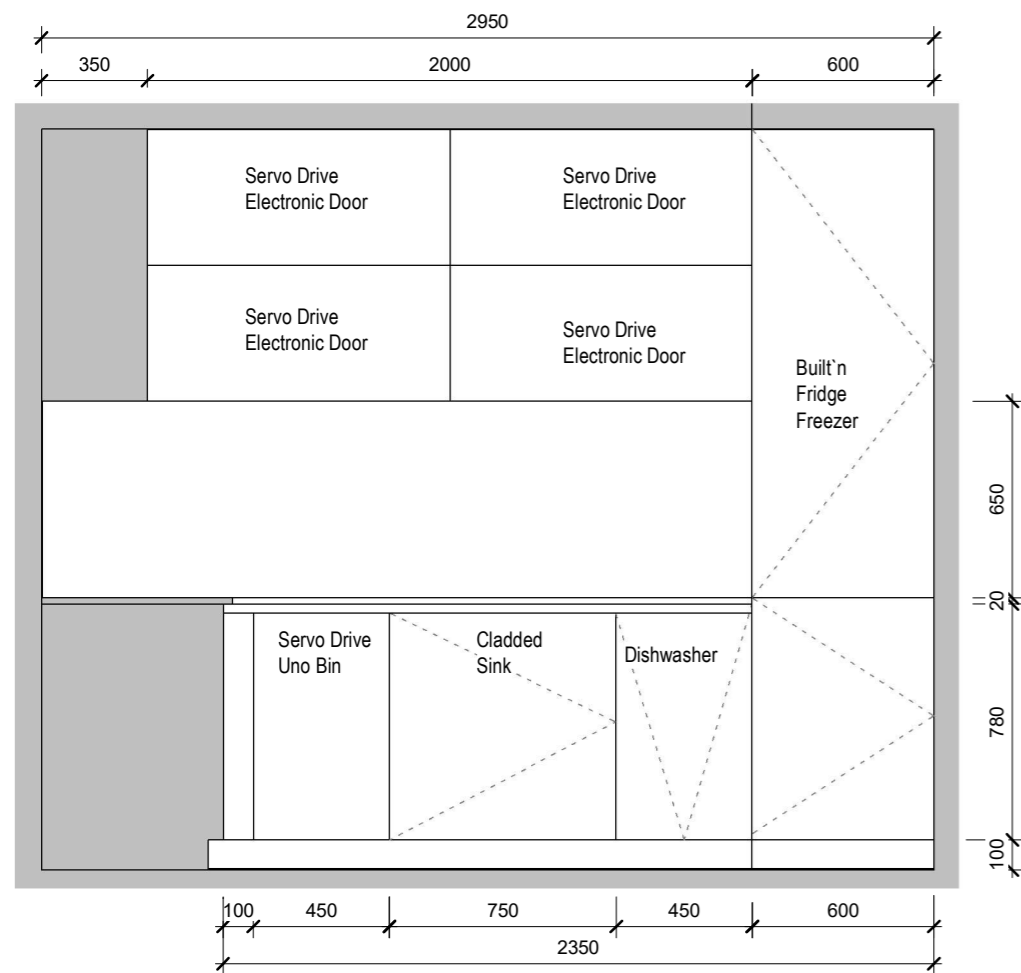
88 Union Street London SE1 0NW  
www.be-studio.co.uk

contact@be-studio.co.uk

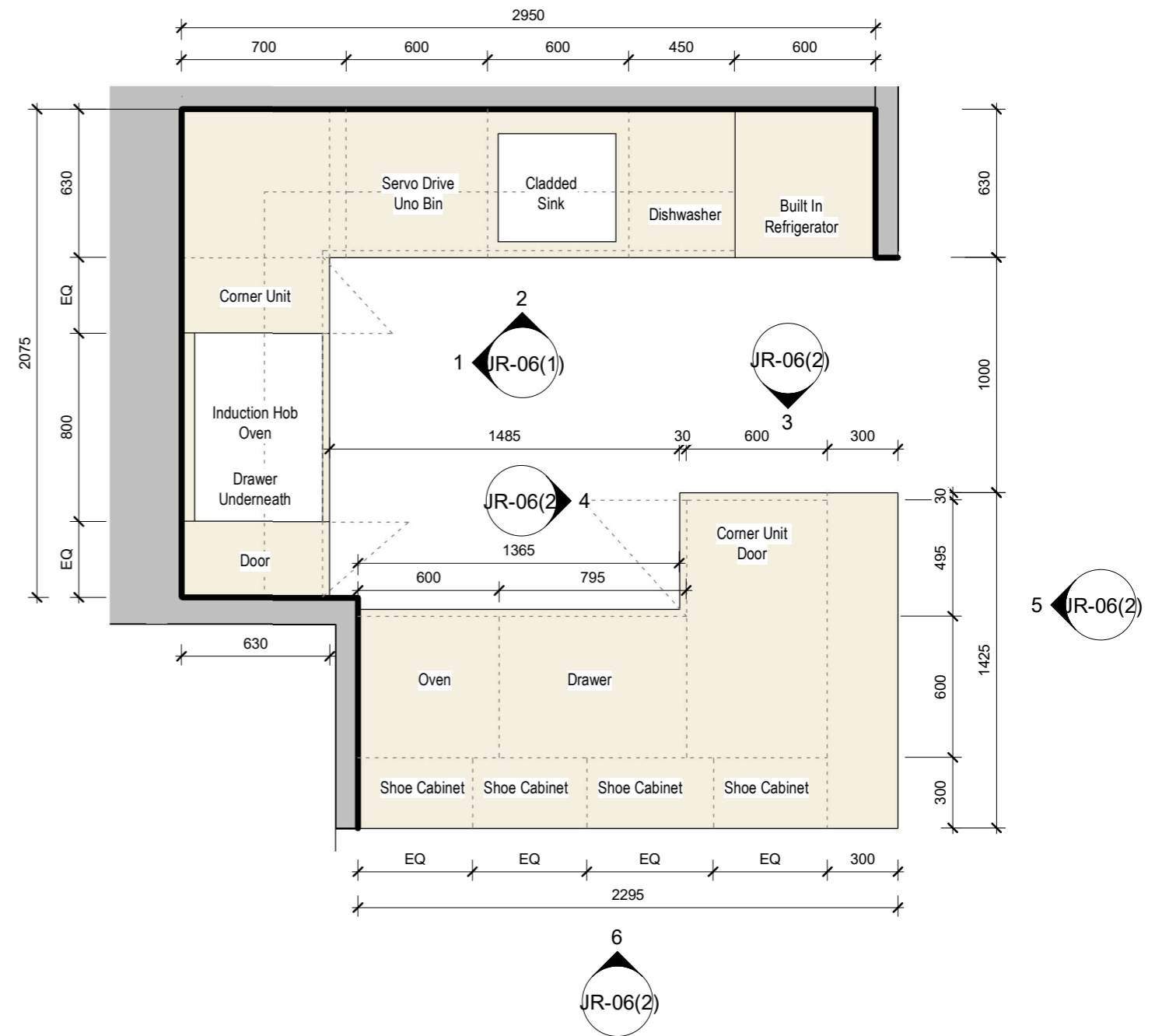
(+44) 0208 0371964



ELEVATION 1



ELEVATION 2



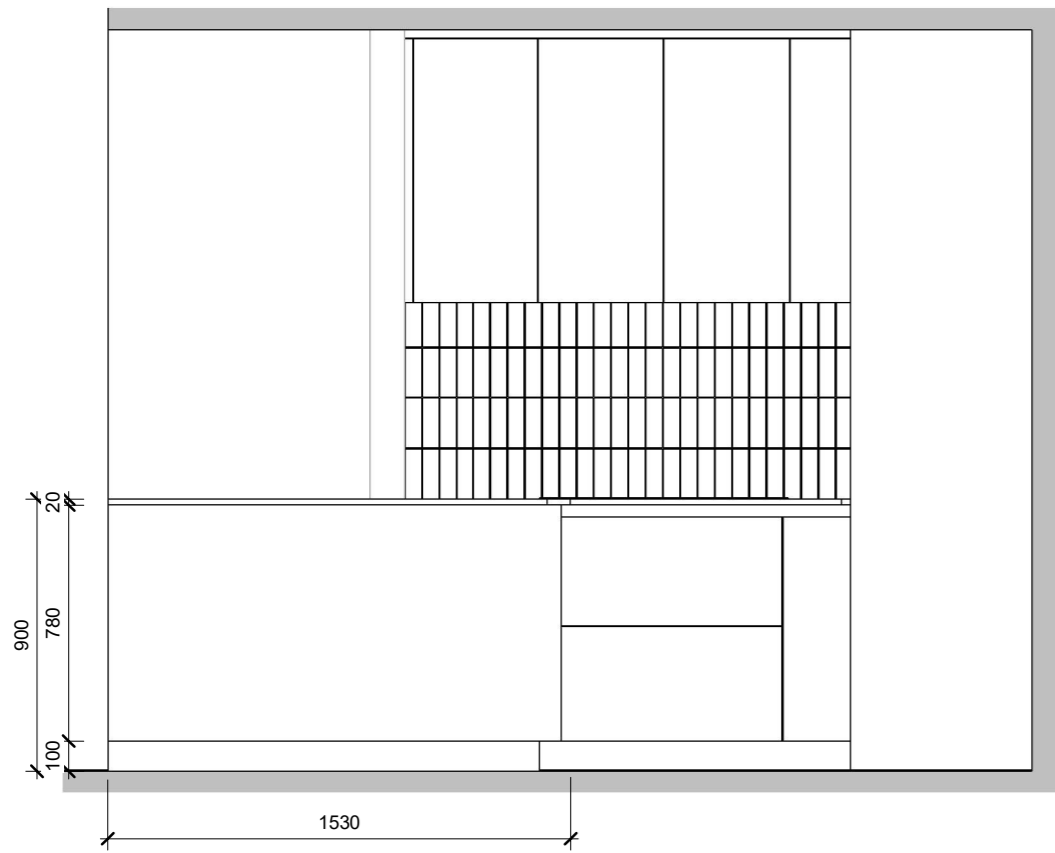
# JR-06(1)

KITCHEN pg 1 of 4

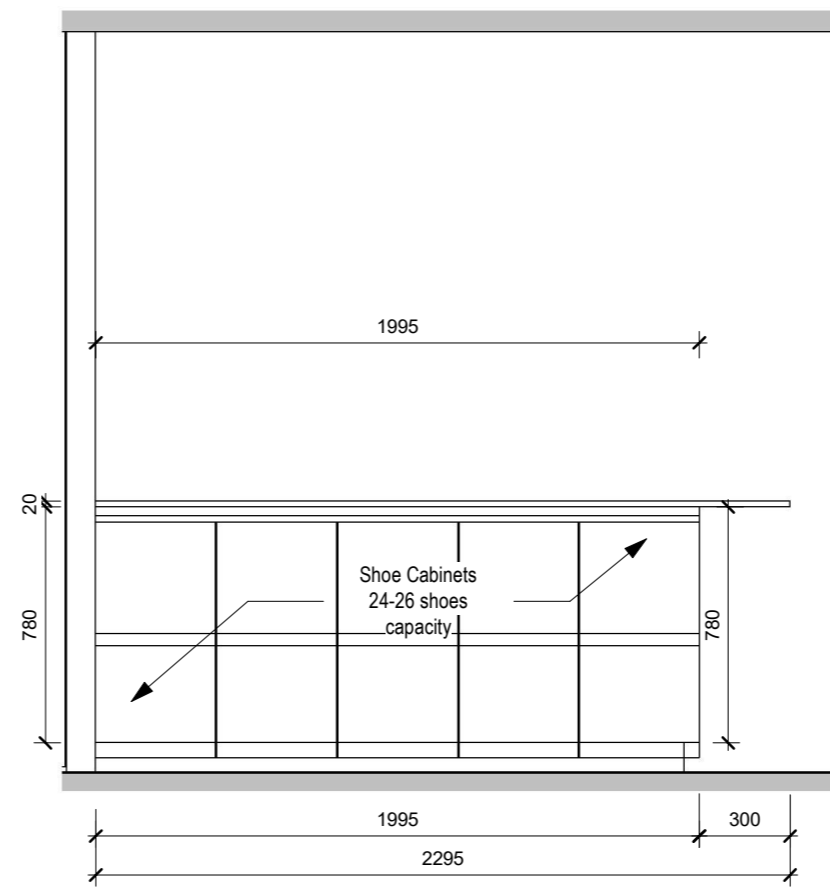
DATE 01/02/2026 SHEET SIZE A3 REVISION

V&V FLAT  
36 Crimscott Street, London, SE1 5YQ UK

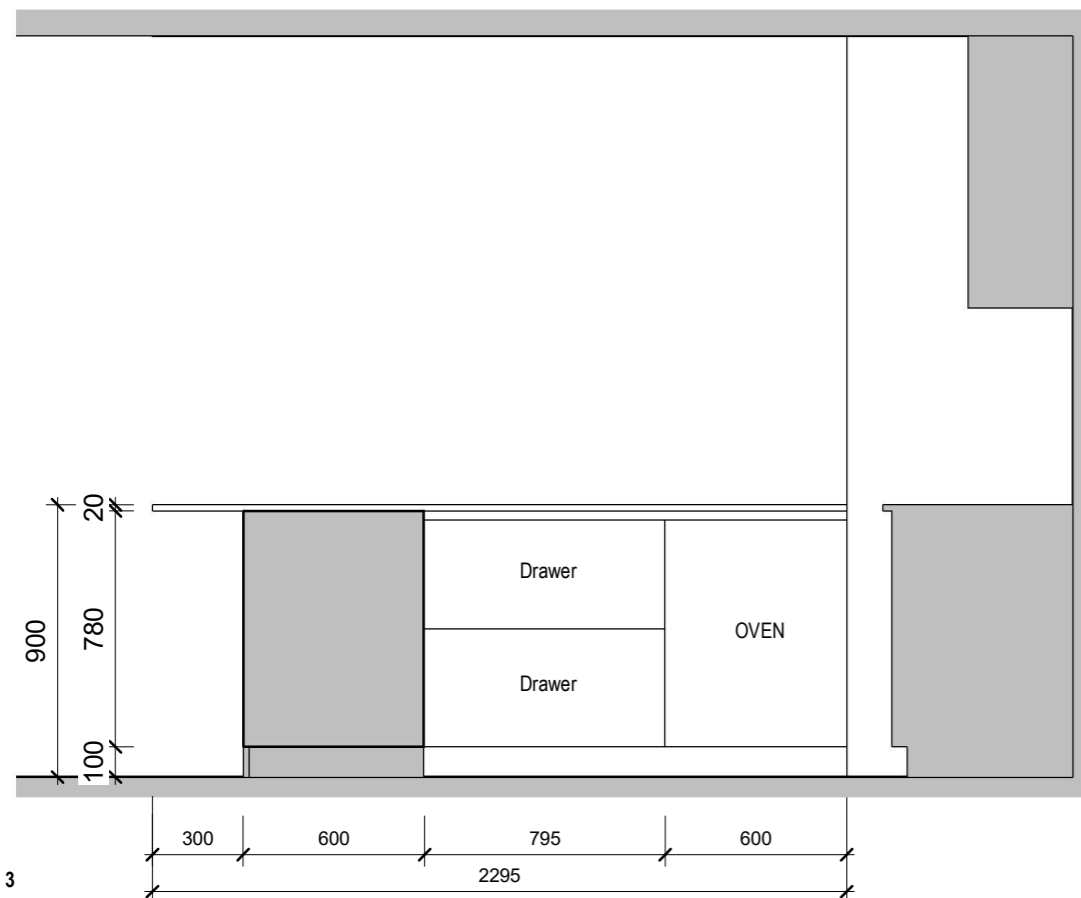




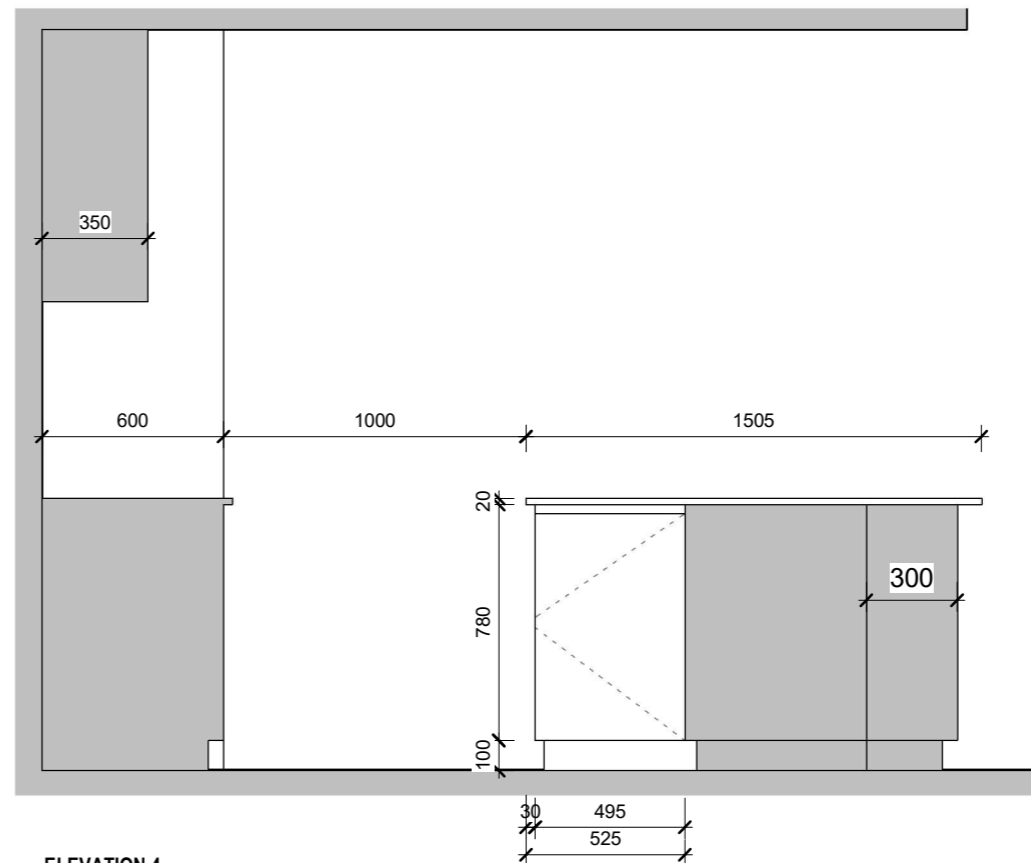
ELEVATION 5



ELEVATION 6



ELEVATION 3



ELEVATION 4

# JR-06(2)

KITCHEN pg 2 of 4

DATE 01/02/2026 SHEET SIZE A3 REVISION

V&V FLAT  
36 Crimscott Street, London, SE1 5YQ UK





**DOOR PANELS**  
 FINISH: NATURAL ASH WOOD VENEER MDF  
 VENEER CODE: TABU 26.049  
 CUT : CROWN CUT  
 DOOR THICKNESS : 22MM

**CARCASS:**  
 FINISH : MCF  
 COLOR TO MATCH DOORS



**WORKTOP**  
 BRAND : DEKTON  
 PRODUCT CODE : TK06 MARMORIO  
 THICKNESS : 20MM  
 EDGE : FLUTE POINT



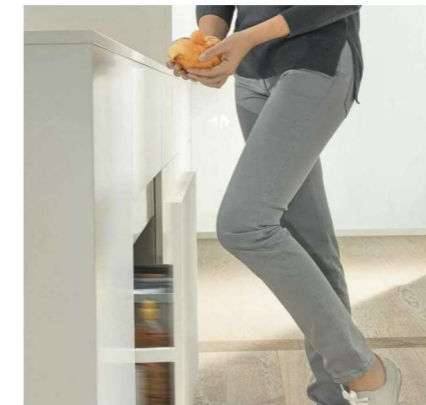
**BACKSPLASH**  
 BRAND : DEKTON  
 PRODUCT CODE : UMBER  
 THICKNESS : 8MM  
 SIZE : TBC



**KITCHEN SINK**  
 COUNTER TOP MITERED AND BOXED  
 CLADED SINK



**UPPER CABINETS**  
 WITH BLUM SERVO DRIVE AVENTOS



**BIN DRAWER**  
 WITH BLUM SERVO DRIVE UNO



**SHOE RACK**  
 FLIP SHOE RACK  
 WITH HAFELE HINGES  
 PRODUCT CODE : 892.14.737

# JR-06(3)

KITCHEN pg 3 of 4

DATE 01/02/2026 SHEET SIZE A3 REVISION

**V&V FLAT**  
 36 Crimscott Street, London, SE1 5YQ UK





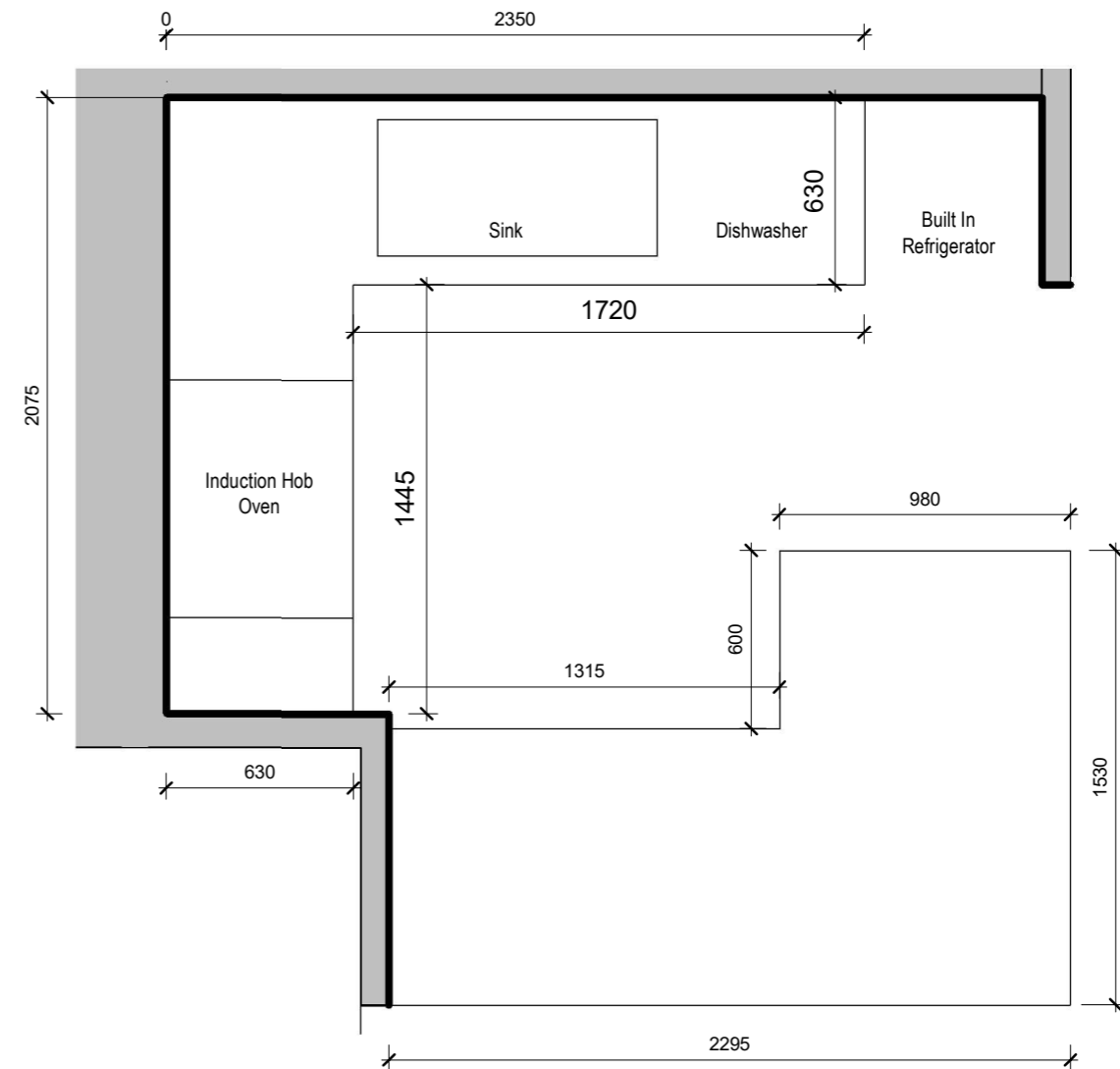
# JR-06(4)

KITCHEN pg 4 of 4

DATE 01/02/2026 SHEET SIZE A3 REVISION

V&V FLAT  
36 Crimscott Street, London, SE1 5YQ UK





**WORKTOP**  
 BRAND : DEKTON  
 PRODUCT CODE : TK06 MARMORIO  
 THICKNESS : 20MM  
 EDGE : FLUTE POINT

- INDUCTION HOB AND SINK CUTOUTS TBC
- COUNTER TOP FINISH: TRAVERTINE LOOK PORCELAIN. TBC

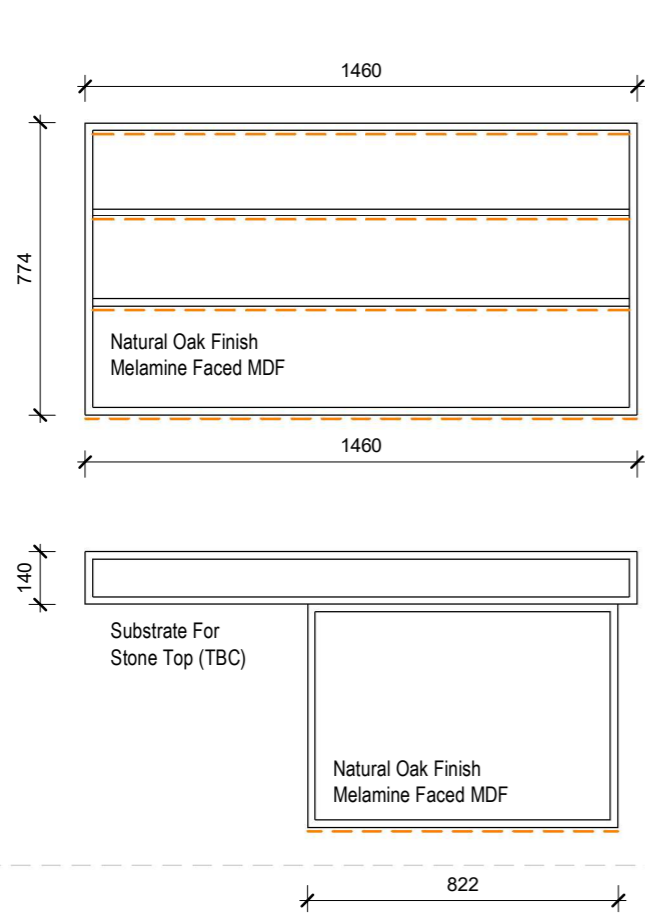
## JR-07

### KITCHEN COUNTER TOP

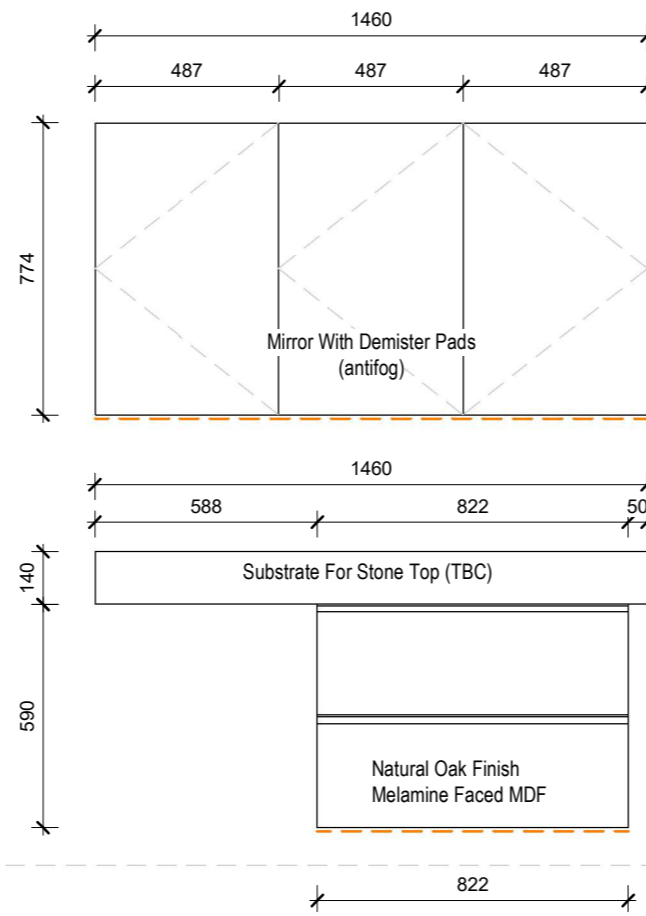
DATE 01/02/2026 SHEET SIZE A3 REVISION

**V&V FLAT**  
 36 Crimscott Street, London, SE1 5YQ UK

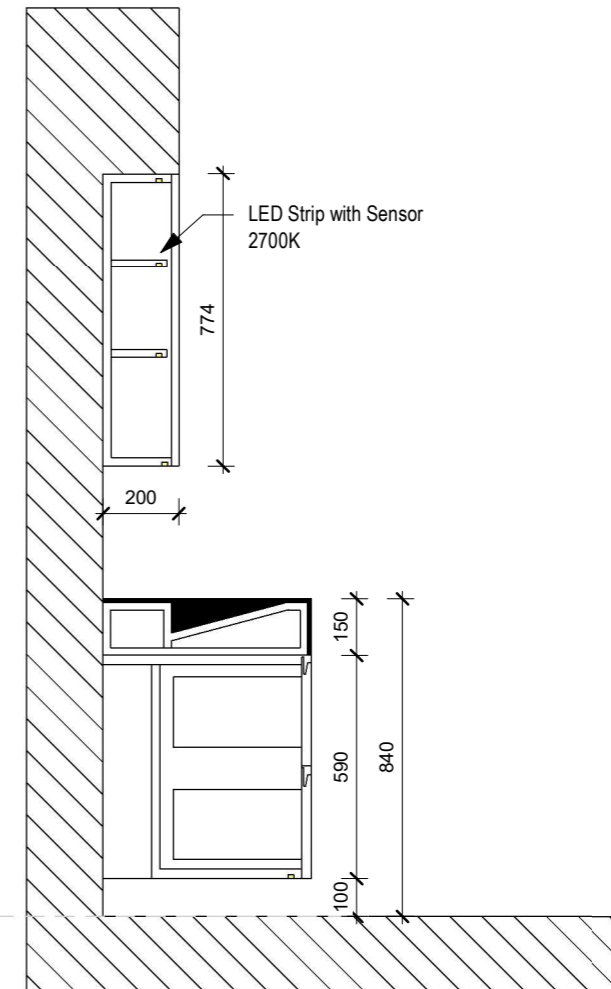




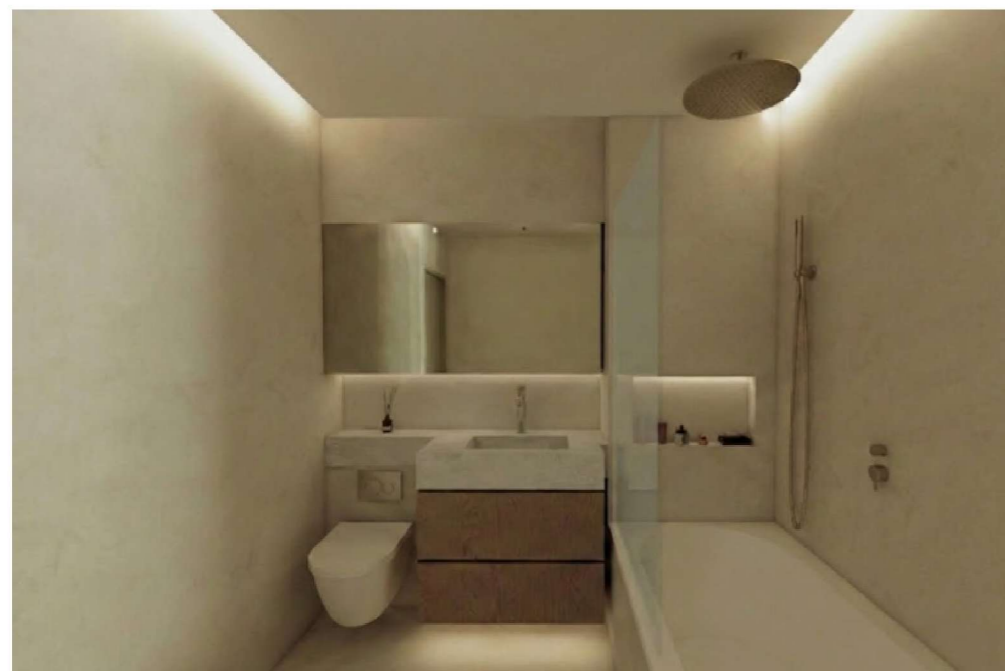
FRONT ELEVATION - OPEN



FRONT ELEVATION - CLOSED



SECTION



**Front Panels / Doors**  
 FINISH: NATURAL ASH WOOD  
 VENEER MDF  
 VENEER CODE: TABU 26.049  
 CUT : CROWN CUT  
 DOOR THICKNESS : 25MM

**Carcass Material:**  
 FINISH : MCF  
 COLOR TO MATCH DOORS



# JR-08

## BATHROOM VANITY & MIRROR

DATE 01/02/2026 SHEET SIZE A3 REVISION

**V&V FLAT**  
 36 Crimscott Street, London, SE1 5YQ UK



